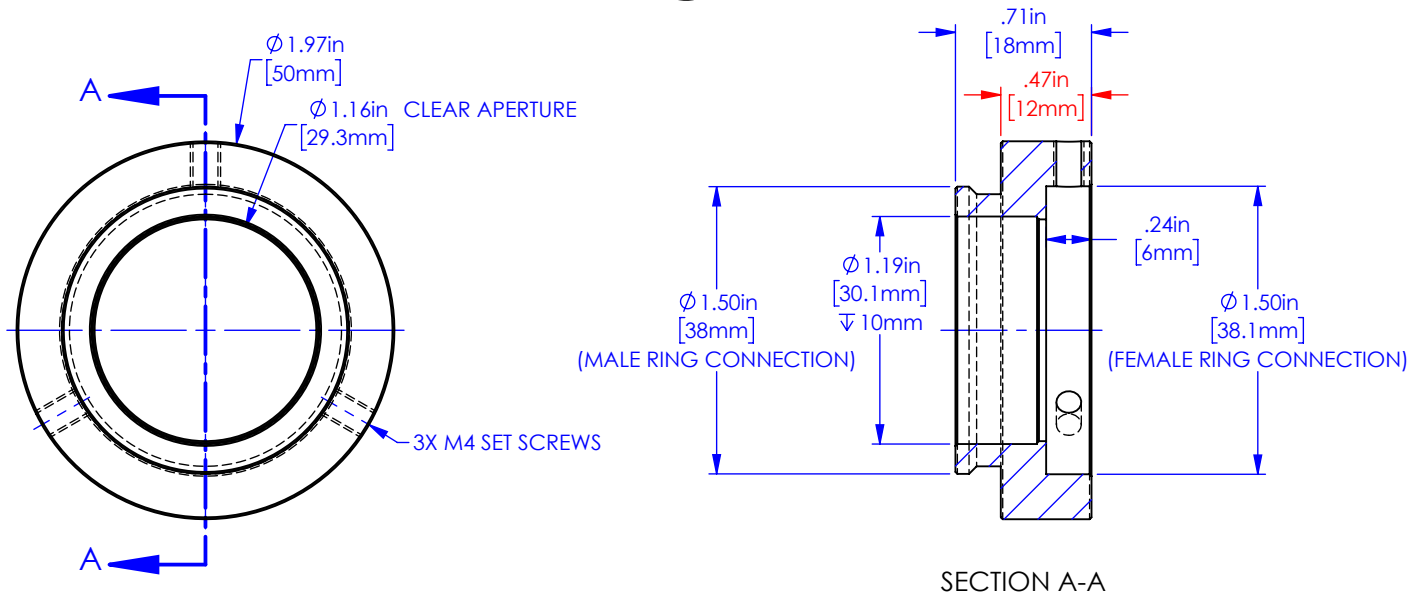
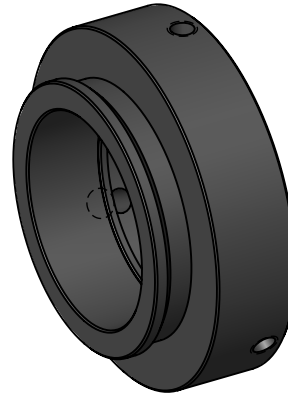


C60-EXT-12



NOTES:
1) PROVISION FOR A Ø30mm GLUE-IN OPTIC



PROPRIETARY AND CONFIDENTIAL
THE INFORMATION CONTAINED IN THIS DRAWING IS THE SOLE PROPERTY OF APPLIED SCIENTIFIC INSTRUMENTATION. ANY REPRODUCTION IN PART OR AS A WHOLE WITHOUT THE WRITTEN PERMISSION OF APPLIED SCIENTIFIC INSTRUMENTATION IS PROHIBITED.

APPLIED SCIENTIFIC INSTRUMENTATION
29391 W ENID RD
EUGENE, OR 97402-9533
PHONE: (541)461-8181
FAX: (541)461-4018

UNLESS OTHERWISE SPECIFIED
DIMENSIONS ARE IN INCHES
.xx ± .01
.xxx ± .005
xxxx ± .0002
FRACTIONS ± 1/32
ANGLES ± 1°

DESCRIPTION

12mm EXTENSION TUBE
w/MALE TO FEMALE C60-RING MOUNTS

DRAWN BY/DATE

M.ANTHONY 11-16-20

CHECKED BY/DATE

V.MARSO
J.DANIELS 11-16-20

SCALE

1:1

REV

-

MATERIAL

6061, ANODIZED BLK

DRAWING #

C60-EXT-12