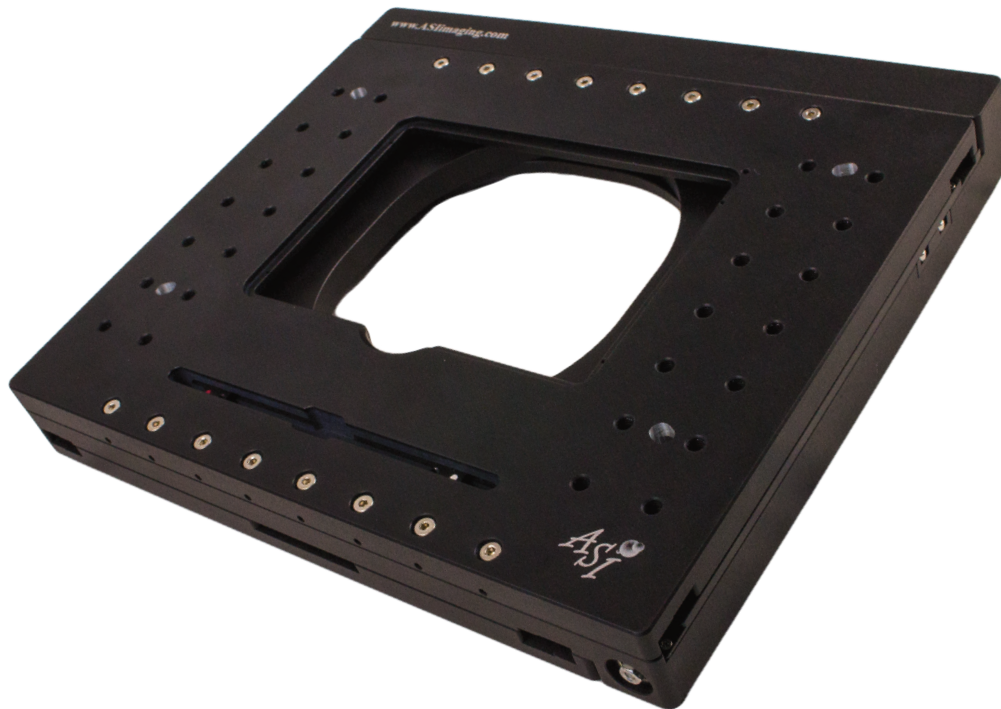




APPLIED SCIENTIFIC  
INSTRUMENTATION

## RM-1250 GEN II STAGE



### Overview

The RM-1250 XY stage is the culmination of over two decades designing and manufacturing automated XY stages for demanding customers. A flat top, flat bottom, and multiple mounting configurations make it easy for laboratories and manufacturers to integrate it into existing systems. No detail went unexamined in the design of the RM-1250 Gen II. Linear encoder options are mounted inside the bearings, as close as possible to the sample for optimized accuracy. The RM-1250 has a higher load capacity due to its rigid body construction and intelligent bearing placement. Ultra-hard, wear-resistant coatings on our bearings provide reduced friction and increased corrosion protection. The RM-1250 can utilize anti-creep technology for high throughput scanning and robotic loading applications.

Like all of ASI's XY stages the RM-1250 provides highly resolved and precise motion with excellent repeatability regardless of all other options like leadscrew pitch, piezo top-plate, linear encoders and controller.

### Features

- 125 mm x 125mm travel
- Single connector for both axes
- Multiple mounting options
- Flat top, flat bottom
- Easy to integrate into existing systems
- Linear encoder options mounted inside bearings, close to sample for optimized accuracy
- Rigid body construction
- Ultra-hard, wear-resistant bearings provide reduced friction and increased corrosion protection
- Suitable for high throughput scanning and robotic loading applications

# RM-1250 GEN II STAGE

## Technical Drawing

