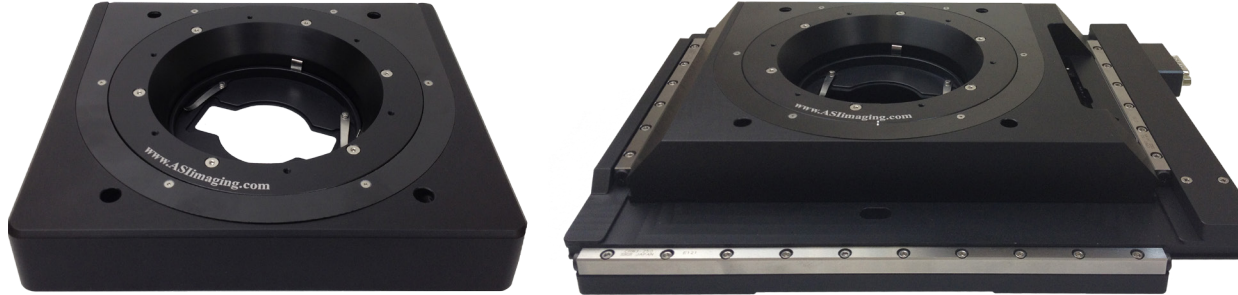




APPLIED SCIENTIFIC
INSTRUMENTATION

PRS-1000 Precision Rotary Stage



The PRS-1000 Precision Rotary Stage utilizes ASI's proven precise control through the use of closed-loop DC servomotors and angle encoded out drive. The low profile design with the ability to be integrated into our MS-2000 XY stages offers flexible usage. Standard versions have a \varnothing 95 mm clear through aperture, use all of ASI's C size inserts, and have M3 tapped holes on 125 mm D.B.C. The PRS-1000 is also available with solid top plates for vacuum applications and M6 on 25mm centers.

Specifications for Standard Configuration

Travel Range	360° Continuous (bi-directional)
Max Velocity	10°/s
Load Capacity	2kg (higher loads available)
Angle Encoder Resolution	0.00019°
Overall Height	30 mm
Clear Aperture	\varnothing 95 mm
Run Out	<20 μ m