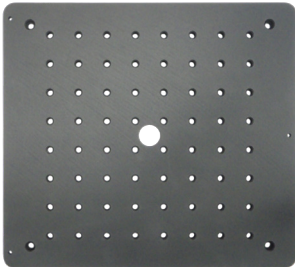




APPLIED SCIENTIFIC  
INSTRUMENTATION

## 257 x 231mm Inserts



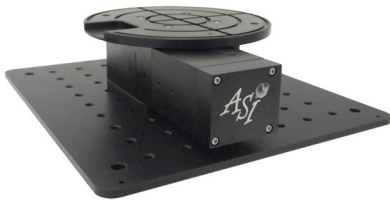
### English Center-Mounting Plate Insert (I-8001 or I-8004)

The I-8001 or I-8004 Metric or English breadboard insert provides a removable base plate for mounting equipment using M6 bolts on 25 mm centers. or 1/4"-20 bolts on 1-inch centers, plus with other smaller mounting holes around the center at common spacings.

Also available as English 1/4"-20 holes on 1-inch centers [I-8002].

Depth from top of Insert: N/A

Overall Thickness: 9.5 mm



### Motorized Rotary Stage Insert (RS-3000 & I-8004)

This insert has an RS-3000 motorized rotary stage mounted to an I-8004 plate insert, and, in this case, with a 150 mm diameter vacuum chuck affixed. Resolution is 0.12 arc-minutes with ASI's closed-loop DC servomotor drive. The top of the vacuum chuck is approximately 60.4mm above the top of the insert.

Depth from top of Insert: 60.4mm

Overall Thickness: 69.9mm



### Glass Plate Insert for MS-8000 (I-8008)

The I-8008 glass insert provides a large specimen area the full size of the insert. It is made of 4.8 mm (3/16") chemically strengthened soda lime float glass.

Depth from top of Insert: N/A

Overall Thickness: 4.8 mm