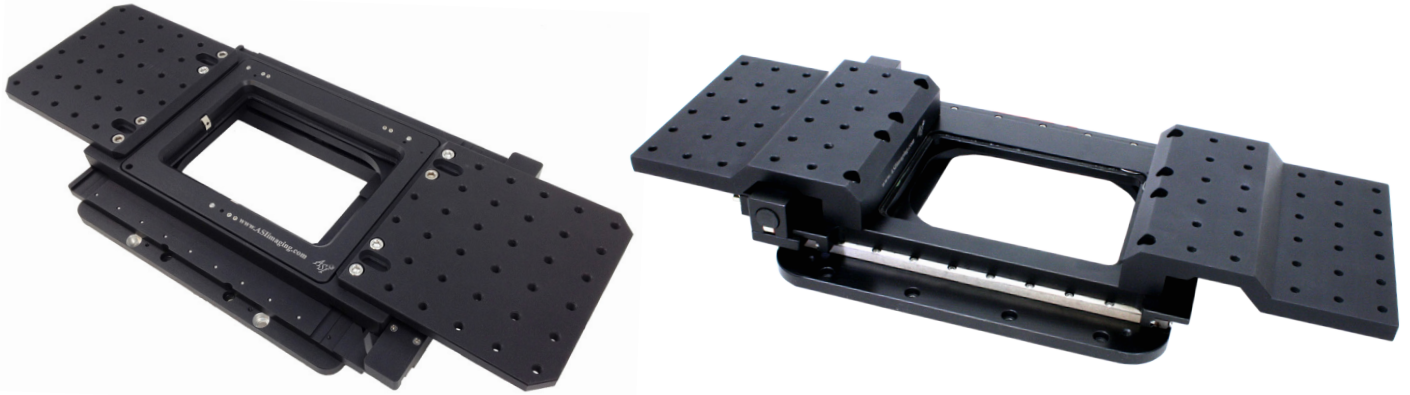




APPLIED SCIENTIFIC
INSTRUMENTATION

Stage Wings



The ASI stage wing option consists of two solidly machined extender wings that can be securely bolted onto ASI's precision automated stages. The stage wing option allows micromanipulators, like the MM-33 unit shown here, to be easily and securely attached to the top plate of the stage. This allows the micromanipulator to be moved in both the X and Y axis with the sample. The stage wing option also allows other devices such as perfusion tubes or Stereotaxic equipment to be securely attached to the stage. The standard wings have 1/4 - 20 threaded holes on one-inch centers.

Metric versions are available with M6 x 1 threaded holes on 25 mm centers.

Part Numbers

STWS (Standard): Stage Wings-English. For MS-2000 inverted microscope stages only. Pair (2) of standard wings with 1/4 - 20 threaded holes on 1 in. centers.

STWM (Metric): Metric Thread Stage Wing Option for Inverted microscope stages only. Pair (2) of standard wings with 6mm threads on 25mm centers

FTSWM: Stage Wings for flat top stage. Metric M6 threads on 25 mm centers. Pair (2).

FTSWM-MAG: Stage Wings Magnic addaptors for flat top stage. Blue tempered spring steel plate used with STWS stage wings for magnetic mounts while keeping the mass low.

