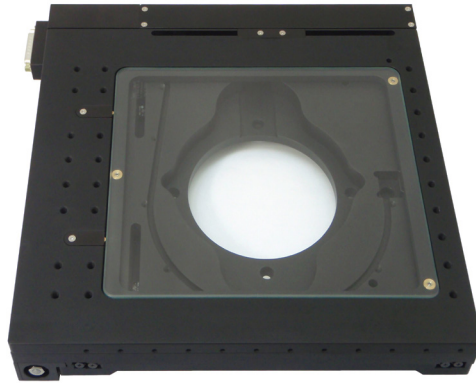




APPLIED SCIENTIFIC  
INSTRUMENTATION

## MS-8000 XY Automated Stage



The MS-8000 stage is suited to use with large industrial inspection microscopes such as the Nikon L200/300 series or Olympus MX51/61 series. The open frame allows for transmitted light illumination. The stage can be supplied with either a glass plate insert, or a variety of large format stage inserts, including a vacuum wafer chuck for semiconductor inspection.

The DC servo motor stage is compatible with either small precision anti-backlash gear-head motors or larger spur-head motors for faster speeds. The stage is also compatible with optional high accuracy linear encoders.

### Features

- Closed-loop DC servo control for precise positioning and highly repeatable focusing
- Wide dynamic speed range with XY joystick control
- Backlit LCD display shows X, Y, and Z coordinates
- "Zero" and "Home" button for simple stand-alone operations
- Compact ergonomic tabletop control unit size is 6" D x 9" W x 3" H
- Microprocessor control with RS-232 serial and USB communications
- Proven operation with many popular software packages

### Linear Encoder Options

Axis	Resolution	Scale Accuracy
XY	10 nm	± 3 µm per length of scale

### Lead Screw Options with 141:1 Anti-Backlash Gear-Head Motors

Lead Screw Pitch Options	Encoder Resolution	Maximum Speed	Repeatability
1/4"	22 nm	6.4 mm/sec	0.8 µm
1/2"	44 nm	12 mm/sec	1.6 µm
1"	88 nm	24 mm/sec	3.5 µm

### Lead Screw Options with 3.7:1 Gear Head Motors

Lead Screw Pitch Options	Encoder Resolution	Maximum Speed	Repeatability
1/16"	210 nm	30 mm/sec	4.5 µm
1/4"	0.84 µm	120 mm/sec	8.0 µm
1/2"	1.7 µm	240 mm/sec	15.0 µm