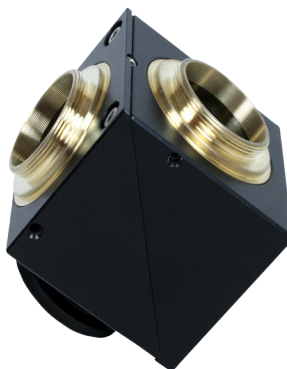


Dual C-Mount Splitter - DCMS



The Dual C-Mount Splitter (DCMS) provides two parfocal C-Mount ports when mounted on many common microscopes. Typical uses include combining a fast analog autofocus camera system simultaneously with a high-resolution digital camera. The assembly accepts standard size mirrored and dichroic glass plates. Additionally, a standard filter can be inserted behind each of the C-Mounts. The male C-Mounts can be rotated and locked at any orientation. Photoport adapters are available for most microscopes, as applicable.

Specifications

Mirror Options	50/50
	30/70
	20/80
	10/90
	Standard Dichroic Choices
Mirror Plate Dimensions	36.0 x 25.5 x 1.1 mm (1.42" x 1.00" x 0.04")
Filter Dimensions	25 mm (1") Diameter 3.7 mm (0.145") Thickness
Built-in Photoport Adapter	30 mm Zeiss (OD) 22 mm (0.867") (ID)
C-Mount Standard (Male)	1.00" (OD), 32 threads/inch 22.1 mm (0.87") (ID)
Cube Dimensions	45.8 x 45.6 x 41.0 mm (1.80" x 1.79" x 1.61")